

# 17-4PH

17-4PH is a chromium-nickel-copper precipitation-hardening martensitic stainless steel. Combining high strength and wear resistance with corrosion resistance and weldability, makes for a very versatile material.

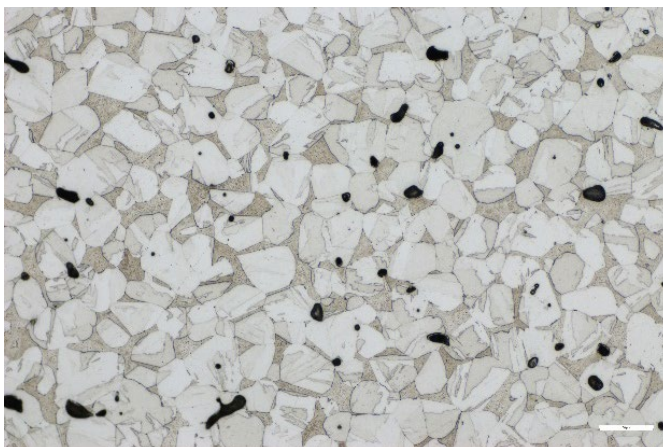
The material is used within many industries - petroleum, chemical, aerospace etc. - in everything from heavy-duty machine components to couplings, screws, drive shafts, nuts and more. Properties can be tailored through heat treatments toward the specific requirements.

## COMPOSITION - TYPICAL VALUES

Element	[Weight %]
Fe	Balance
Cr	16.5
Ni	4
Cu	3.5

## PHYSICAL PROPERTIES - TYPICAL VALUES

	As sintered	H900
Ultimate tensile strength [MPa]	950	1250
Yield strength [MPa]	730	1100
Elongation [%]	4	7
Hardness [HRC]	27	38
Relative density [%]	98	98



As sintered



## FEATURES

- High strength and wear resistance
- Corrosion resistance
- Weldable
- Hardenable
- Magnetic

## TENSILE PROPERTIES - AS SINTERED VS H900

